

28TH SEPTEMBER 2025



SPIRITUAL EMPHASIS CAMPAIGN

JESUS ^{THE} HIGH ROAD *Leader*

Vision

Becoming Christ-like Disciples, Engaging the World

Mission

To be a Worshipping Community, helping one another to be obedient to God's Word and to be Ambassadors of Jesus Christ in a needy world

2025 Theme

Leadership Development

Growing and Nurturing Leaders in the Community.

THEME VERSE: Exodus 18:21-22

Sunday Services

Adults | Youth | Children

9:00AM & 11:00AM

Wednesday Prayer Service

6:00PM - 7:30PM

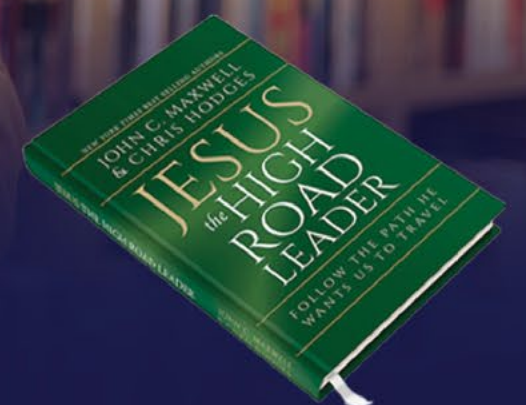


WATCH AND LISTEN

Join us for Sunday Services at 9 AM & 11 AM. Catch all weekly lessons and sermons on our YouTube channel (@KaruraCC) or listen on your favorite streaming platforms.



READ THE BOOK



Read the book **Jesus The High Road Leader** by John C. Maxwell & Chris Hodges Copies are available at the church.

Paperback Cover **Kes 1000/=** Hard cover **Kes 2000/=**



MEET AND DISCUSS

Join a **Community Life Group (CLG)** Physical or Online to discuss and connect over the weekly lessons. Get involved by reaching out via **0727 481 707** or **connect@karuracc.or.ke**



MEMORIZE SCRIPTURE

Make it a priority to **memorize our weekly memory verses** and hide **God's Word in your heart**. By internalizing these verses, you'll gain wisdom and strength to apply **biblical truths in your daily life**.



LIVE IT OUT

Put your **faith into action** by practicing what you learn. Apply the teachings to your **daily life**, letting them guide your decisions, relationships, and **personal growth throughout the week**.

YOUTH MINISTRY



JESUS THE
HIGH ROAD
Leader

GIVE MORE THAN YOU TAKE WITH PST ANGIE



#LiveAndLeadLike Jesus



I MUST _____.

WITH BETTIE GITHINJI

1. Foundations:

- **Stewardship defines.** “You are not your own, for you were bought with a price.
- **Love directs.** Loving God and loving our neighbor are the two greatest commandments.
- **Gospel displays.** God is giving every moment.
- **Worship demands.** Giving is “a fragrant offering, a sacrifice acceptable and pleasing to God”.

2.I must be about my father’s business;

What is your I must?

a) I must _____

b) I must _____

3.I must stop;

What is your I must?

a) I must _____

b) I must _____

1. I must be intentional;

What is your I must?

a) I must _____

b) I must _____



MEMORY VERSE WEEK 3

Mathew 25:21 (NIV)

“His master replied, ‘Well done, good and faithful servant! You have been faithful with a few things; I will put you in charge of many things. Come and share your master’s happiness!’



KARURA PODCAS

T

Take the Word With You!

Listen to Karura Community Chapel sermons anywhere, anytime via our official podcast. Scan the codes below to find us.





SPIRITUAL EMPHASIS CAMPAIGN

JESUS^{THE} HIGH ROAD *Leader*

LESSON FOR CLG & YLG GROUPS

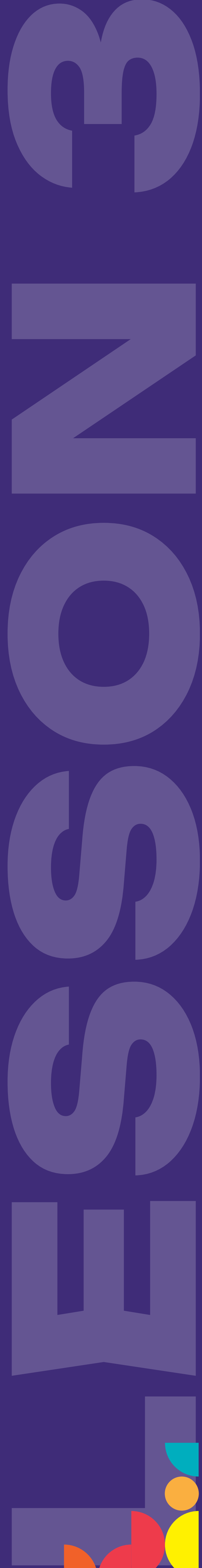
LESSON 3-CHAPTER 3: JESUS GAVE MORE THAN HE TOOK

ADVICE FOR CLG/YLG FACILITATOR

This lesson outline enables the person leading the discussion in a Community Life Group (CLG facilitator) or Youth Life Group (YLG facilitator) to have a deeper understanding of the lesson content so that they can direct and guide the discussion effectively. Therefore, the CLG/YLG facilitator is advised to read and understand the lesson outline before leading the discussion session.

It is beneficial for the CLG/YLG Members go through a process of self-discovery as they share experiences, thoughts and scripture in response to the questions set forth in this lesson. As such, the CLG/YLG Facilitator is encouraged to share the questions and memory verse first, then they can choose to share the lesson outline at the conclusion of the session.

Key Theme: True generosity begins with God and overflows into our relationships.





Lesson Outline:

- Generosity defined: giving more than required or expected.
- God as the source of generosity—John 3:16.
- Being open-hearted and alert to opportunities.
- Overwhelming others with grace, kindness, and provision.

MEMORY VERSE

Mathew 25:21 (NIV) “His master replied, ‘Well done, good and faithful servant! You have been faithful with a few things; I will put you in charge of many things. Come and share your master’s happiness!’

DISCUSSION QUESTIONS:

Scripture references: 1 Timothy 6:18-19, John 13:1-17, Mathew 10:8, Mathew 6:6-13, Genesis 24:12-14


1. Share three key lessons that you learnt from last Sunday’s sermon and from the Readings of Chapter 3?
2. How is biblical generosity different from just giving?
3. Share a story of when someone’s generosity impacted you.
4. What keeps us from being generous, and how can we overcome it?
5. What opportunities to practice generosity can you identify this week?

Care Needs

Let us all pray and continue to offer support to their loved ones.

1. Sheila Mayo who lost her dad.
2. Godfrey Kahinga who lost his brother.
3. Thanksgiving for Scovia who has been discharged from hospital

If you would like the church to pray with you, please reach out to our care pastors on the care line: 0721 766016 or email care@karuracc.or.ke.



**Do you have a
prayer need?**



**CLICK
Here to
let us
know.**

Have you, in the recent past, received pastoral care from Karura Community Chapel?

This could have been through a home visit, hospital visit, funeral support, counselling, or any other form of care that made you feel shepherded and loved in Christ. Would you be willing to share your testimony of how the church supported you? Do you consent for your story to be recorded—either visually or in writing—and shared on our church platforms for the encouragement of the body? If so, please email judy@karuracc.or.ke or call 0719 136 805.

Church Family Life



Saturday,
27th Sept '25
9am - 4pm



Karura
Community Chapel
Limuru Rd

Topic: Health & Wellness

@karuracc

www.karuracc.or.ke

Equipping and Training Ministry



SEPTEMBER IS DEAF AWARENESS MONTH

Partner in-kind or in person to help reach out to and empower persons with hearing disabilities

Home Visitations: Wednesdays, Fridays and Saturdays | 10am - 3pm

Support us via KCB Paybill 522533 | Acc No: 7729946#SIGNL

@karuracc

www.karuracc.or.ke

OMBI Season Three



A 10-week journey into the heart of powerful, effective prayer.

Key Topics Covered:

- Pillars of Effective Prayer
- The Power of Intercession
- Spiritual Warfare
- Joy of fasting
- Praying for the Family

Starts Sunday 28th September 2025

Time: 11am - 1pm

Venue: Karura CC, Limuru Rd

Cost: Kshs 4,000 (Includes Study Book, Refreshments, and Retreat)

Register via: Email: ombi@karuracc.or.ke or call - 0708122457 (Eliud Temoi)

Paybill: 522533

Account Name: 7729946#Ombi

@karuracc

www.karuracc.or.ke



TED TALK TYPE *Conversations* ON PURPOSEFUL LEGACY

Speakers



DR. JAMES MWORIA, MBS
Group CEO & MD
Centum Investment Company PLC



JUDY MZUNGU JABALI
Kingdom Life Coach®,
Mental Wellness champion
Founder, The Re-alignment Solution©



JOB ODUOR OWINO
Elder, Mentor, Servant of
Family & Marriage Ministry,
Karura Community Chapel

Friday 17th October 2025 | 6pm - 9pm
Karura Community Chapel, Limuru Road

SCAN TO REGISTER



@karuracc
www.karuracc.or.ke

For more information & registration contact Temoi through 0708122457



MENTORSHIP

COLLABORATING TO CREATE GENERATIONAL WEALTH

OUR SPEAKER

Tim is a proven business builder and board leader with a history of scaling companies and founding startups. Today, he guides CEOs and boards in creating organizations that grow, last, and make a real impact.



Tim Boyce

Chairman of the Board of Managers
Synpios, KMG Propel, and Agora Partners Holdings.

SCAN TO REGISTER



5th Oct
2025

2:00pm - 5:00pm

Karura Community Chapel, Limuru Rd

For more information & registration
contact contact person is Angela,
angela@karuracc.or.ke or 0762494611

Church Family Life



MONTHLY FELLOWSHIP

FEAR & ANXIETY

4TH
OCT '25

10AM - 12NOON

KARURA CC, LIMURU RD

Salama Ministry seeks to support/care for individuals going through divorce separation.

For more info & registration, contact Pst. Purity on 0722 655 799

@karuracc

www.karuracc.or.ke



KARURA COMMUNITY CHAPEL
FORESIGHT

BLACK TIE *Kikao*

Stepping Up Finances & Leadership

FRIDAY 31ST OCTOBER 2025 FROM 5PM TILL LATE

SPEAKERS/PANELISTS:

REV'D JOHN GICHINGA | SIMON WAFUBWA | PETER KAGUNYE

EARLY BIRD
3,000/=

LAST WEEK
4,000/=

FATHER & SON (BELOW 18)
5,500/=

PAYBILL: **522533** ACC: **7729946#Kikao**

RSVP:



For Enquiries: 0715 490 372

FINE DINING. MOCKTAILS. NETWORKING. | PANEL WITH RENOWNED CAPTAINS OF INDUSTRIES



CHURCH
FAMILY LIFE
LADIES MINISTRY

Ladies Dinner

"Women of Influence - Touching Generations"



24
OCT

5pm
till late

Charges
3K

Venue: **KARURA
COMMUNITY CHAPEL,
LIMURU ROAD**

Dress Code: **70's Glam / Retro Chic**
Fine Dining | Networking | Inspiration | Music

Paybill 522533 | Acc 7729946#LadiesDinner

For more info contact Rahab Mwangi on 0716 457 555



CHURCH
FAMILY LIFE
LADIES MINISTRY

Johari Ladies Meeting



Grief & Mental Health



Saturday,
25th Oct '25
10am - 12noon



Karura
Community Chapel
Limuru Rd

@karuracc

www.karuracc.or.ke

Services Ministry



ALL WORSHIP AND SERVICES CO-WORKERS

MACHAKOS PRISON

OUTREACH

FRIDAY 10TH OCTOBER 2025 | 7AM -3PM

To support the mission: Paybill 532900 | Acc Machakos Prison

Instagram, X, YouTube, Facebook, TikTok, @karuracc

www.karuracc.or.ke



BE THE First Smile THEY SEE

Join the
Ushering
Ministry today.

Contact Regina on 0700431448

Fundraising



6TH EDITION

TEE TO BUILD

GOLF & NETWORKING EVENT



Friday 31st
October 2025



Limuru Country
& Golf Club

Paybill: 522533 | Account: 7665979#Golf

Fourball:
KES 12,000/-

Single Player:
KES 3,500/-

**Hole in one
Prizes:**

50k Hole No: 5
50k Hole No: 14
25k Hole No: 16

Hole in One Prize
(Hole 7)

2018 TOYOTA
COROLLA FIELDER
Model:
DBA-NZE161G

SCAN TO REGISTER



For more information call
0720821330/0110509009 or LCC 0702 645941





Family SUMMIT '25

"Becoming a Christ-Centered Family"

21ST-23RD NOVEMBER

Karura Community Chapel

Psalms 127:1

"Unless the Lord builds the house, those who build it labor in vain"

f@j@ @KaruraCC



Call for Vendors

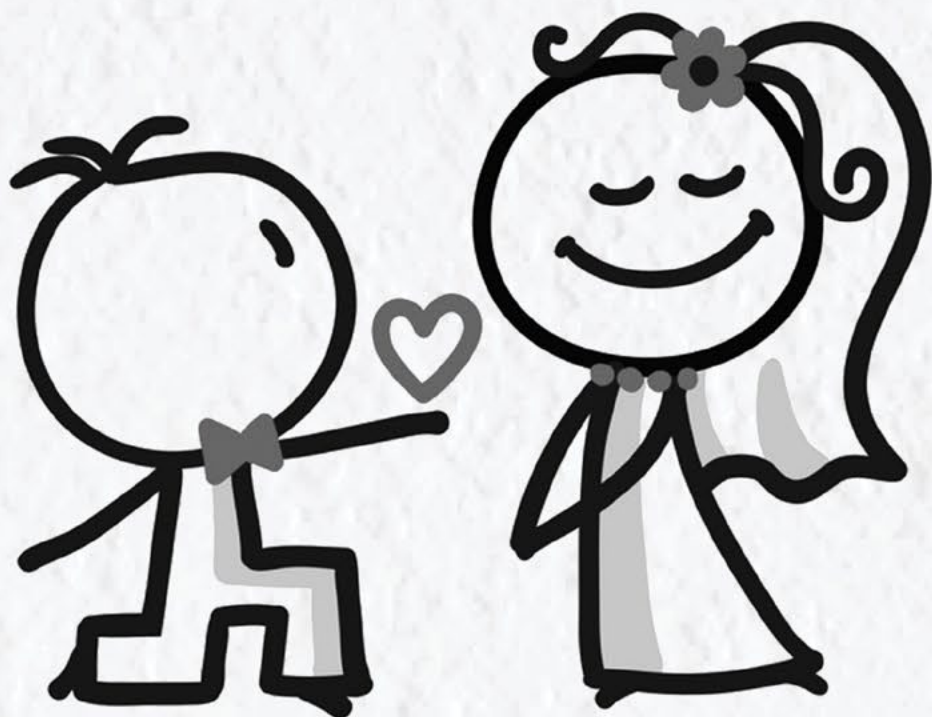


f@j@ @KaruraCC

Wedding Banns

We announce the wedding between James Mutunga David and Vivian Vivi Kasilia, which will take place on 10th October at Karura Community Chapel. This is the second announcement.

If anyone knows of any just cause why these two should not be joined together in holy matrimony, please contact the Church Office.



PREACHING CALENDAR

5

Spiritual Emphasis Campaign
Bishop Ngari Kariithi

12

Spiritual Emphasis Campaign
Bishop Ngari Kariithi

19

Spiritual Emphasis Campaign
Bishop Ngari Kariithi

26

Spiritual Emphasis Campaign
Wallace Maina

2

SEC Celebration Sunday
Rev. Pitson

9

Robert Mbugua

16

Rev. Martin Mukusa

23

Women & Men's Conference
Pst. Ednah Kimani

30

Robert Mbugua

KISIMA CHAMPIONS CENTRE

**FOR
HIRE**

Do you need a convenient, affordable, reliable and well maintained place to host your meetings? Kisima champions offers you over 3,000 Square metres with 20+ rooms to hire throughout the week.

Event spaces for:

- Weddings
- Album Launches
- Graduation
- Indoor Sports
- Arts & Crafts
- Dinners & Cocktails

Amazing Meeting Rooms for:

- Chama Meetings
- Family Gatherings
- Conferences/Workshops/Seminars



+254 721 990 880

Next to Rosslyn Riviera Mall, Limuru Road

info@karuracc.or.ke

www.karuracc.or.ke

RATE CARD

Rooms				
Capacity	Duration	KCC Non Members	KCC Members (CLG/Registered)	No. Rooms
Boardroom Corporate Meetings				
15 pax	Per Hour	2,500	2,000	3
	Rate per month	33,150	22,100	
Kisima Centre Conference Rooms				
30-40pax	Per Day	5,000	4,000	12
	Rate per month	88,400	66,300	
CBC-Related Indoor Games Facilities				
	Per Day	40,000	25,000	2
Weddings & Events				
Capacity	Duration	KCC Non Members	KCC Members (CLG/Registered)	No. Rooms
Kisima Centre & Hall				
250pax	Per Day	70,000	50,000	3
Classrooms - Saturday (Day Meetings)				
	Per Day	5,000	4,000	12
	Rate per month	88,400	66,300	
Classrooms - Weekday (Evening Meetings) 5:30pm - 8:00pm				
	Per Day	2,000	1,500	12
Main Sanctuary (Mon, Tue, Thur & Fri 8am-8pm), (Wed & Sat 8am-4pm) Sunday 3pm-8pm				
1,200Pax	Per Day	100,000	75,000	1
Hekalu - Youth Sanctuary (Mon - Fri 8am-8pm), (Sat 8am-4pm) Sunday 3pm-8pm				
400 Pax	Per Day	55,000	45,000	1

OTHER COST FOR WEDDINGS & OTHER LARGE EVENTS

Sound team cost - KShs. 5,000/-

* For license agreement a monthly flat rate of KShs. 15,000/- will apply for service charge

* Main Sanctuary & Hekalu a refundable amount Ksh. 20,000/- will apply.

FREQUENTLY ASKED QUESTIONS (FAQS)

1. How do I book a space?

You can book a space by calling our reservations team at 0721990880 or sending us an email to info@karuracc.or.ke who will work with you to reserve and share your booking and payment details.

2. What kind of events can I host?

You can host a variety of events including funeral planning meetings, church group meetings, pre-wedding meetings, CLG meetings, weddings, corporate events, corporate or business team buildings or even school related events and many more

3. When can I choose to have my meeting/event?

Kisima Champions, Main Sanctuary and Hekalu are available for short term hires on Mondays to Fridays from 8:00am to 8:00pm. Saturdays 8AM-5PM, Sundays 3PM - 8PM

4.Can I make payments via Mpesa?

Yes, we accept payments via Mpesa for your convenience.

Bank: KCB	USD – GT Bank	MPESA PAYBILL: 759730
Branch: Village Market	Account no. 2250007814	A/C – KCC LICENSE
KES. A/C No. 1104059983		

5.In the event that I had made a booking, paid and have to make a cancellation? What happens?

In the event you need to cancel or reschedule a confirmed booking, the funds paid can be held as credit with the Church. This credit can be utilized by you for a future booking. The funds can be refunded 100% if cancellation is done 10 days prior the event. The Church may cancel the booking if the booking will in the reasonable opinion of the Church, prejudice the reputation of the Church.

WAYS TO *Give*

Tithe & Offering

MPESA PAYBILL: **532900**
A/C: **Tithe and Offering**

Cheques Payable to
Karura Community Chapel

Bank: **KCB** Branch: **Village Market**
Ksh. A/C no. **1104057999**

Pesalink: **USD Account:**
Bank: **Guaranty Trust Bank**
Branch: **Westlands**
A/C No. **2250007814**

PDQ Machines are available
at the info desk.

City on a Hill

WAYS TO GIVE

MPESA PAYBILL: **759730** | A/C – **BUILD**

Bank: **KCB**
Branch: **Village Market**
Kes. A/C No. **1104059983**
USD – **GT Bank**
Account no. **2250007814**

**Click Here to
PLEDGE**

**LISTEN TO OUR
WEEKLY PODCASTS
HERE**

Click      to Like | Follow | Subscribe

Thank you for making it this far, please do share with a friend. :)